



*Steve Allen
British & Colonial Stamps
February List 2012*



42

www.stevenallenstamps.com

Steve Allen
British & Colonial Stamps Co.
Cadlington Hall
Blendworth Lane
Horndean
PO8 0AA

Email; Steveallen-orders@live.co.uk
Tel; 023 92598623

**Cheques made payable to British & Colonial
Stamps LTD**

Barclays ,
81a London Road,
Waterlooville, PO7 7ER
IBAN: GB53 BARC 2069 3423 7460 54
SWIFT IBAN BIC: BARCGB22
ACCOUNT NUMBER: 23746054
BRANCH SORT CODE: 20-69-34

Open 08.30—20.00
Mon—Sat





1



2



3



4



5

1. 1d Black Plate 1a. Lettered JC. Very worn plate, 4 large margins, very fine used with a crisp Red Maltese Cross. £325

2. 1d Grey Black Plate 1a. Showing moderate plate wear. Lettered MH with 4 fine margins and a pristine strike of 4 the Maltese Cross in red. Clear, crisp, full and upright. A lovely stamp and a Royal Certificate. £375

3. 1d Black Plate 1b. A very fine full margined example lettered FF. Cancelled by a crisp black Maltese Cross. RPS Certificate accompanies. £325

4. Inverted Watermark. 1d Black pair plate 1b. Lettered MH-MI. Very fine used with Re3d Maltese Crosses and with large margins all round CAT min £5000. £2400

5. Plate 2. A mammoth. A fabulous 1d Black lettered BL. Large-huge-gigantic margins and a crisp complete cross in Orange-Red. Truly stunning. £675



6



7



8



9

6. 1d Grey Black Plate 2 superb Mint almost unmounted CAT £16,000 lettered EA. In a fine Grey Black shade, 4 fine margins the reverse with clean full original gum and faintest hinge trace. Outstanding. £4200

7. 1d Black Plate 2 lettered EB. A superb used example being very fine used with a perfect upright Red CDS. £375

8. 1d Black Plate 4. A beautiful example lettered PD with excellent margins and a crisp complete Maltese Cross in a vibrant shade of Red and a 'Royal' Certificate. £325

9. 1d Black Plate 5 strip of 4 lettered NG-NJ. Very fine used with red Maltese crosses, with full good to large margins all round. £1850



10



11



12



13



14

10. 1d Red from Black Plate 9 SG 7. Lettered PA. A superb example with 4 margins cancelled with a number 5 in Maltese Cross. CAT £700. £375

11. 1d Black Plate 10 lettered RA. A superb 4 margin example with complete upright Maltese Cross. £675

12. 1d Black Plate 10. A wonderful square cut adhesive lettered DE. A crisp upright Maltese Cross in Black. £425

13. 1d Greyish Black Plate 11 lettered QH (A572) a superb well cut margined example being very fine used with crisp part Maltese Cross leaving profile clear. Quite exceptional. £2400

14. SG 6 2d Pale Blue Plate 1. Lettered QG. A very fine used example 4 good margins, superb colour. CAT £900. £450



15

15. 1840 2d Blue Plate 2 being very fine used with a Dorchester CDS. 4 good to large margins. Scarce CAT £9000. RPS Cert. £4800



16

16. 1840 2d Blue Plate with Number 12 in Maltese Cross. A fine used example with 4 good margins. Very scarce. CAT £18000. RPS Cert £5200



17



18



19



20



21

17. 1841 1d Red Brown lettered FH. A pristine unmounted mint example from Plate 72. Post Office Fresh 4 bumper margins. £475

18. SG 8 1d Red Brown Plate 34. Sheet marginal showing inscriptional detail. A very fine cross with perfect margins. Rare this good. £180

19. 1d Red Brown lettered JH Plate 25. VFU with Blue Maltese Cross, RPS Cert. £425

20. 1842 1d tied to piece by a fine Dorchester Town CDS. Lettered SJ Plate 23 with choice margins. A lovely piece. RPS Certificate accompanies. £375

21. Plate 16. A Dorchester Town CDS on 1841 1d Red-Brown lettered LF. A superb strike, fine margins, colour and freshness. RPS Certificate. £325



22



23



24

22. Number 2 in cross. A superb 4 margin example crisp clear upright strike. £85

23. 1841 2d Blue Plate 3. A Blue numeral with large, square cut margins and outstanding colour and freshness. A beauty. £450

24. Number 12 in Maltese Cross on 1841 2d Blue Plate 3. 4 margins. A superb crisp strike CAT £375. £220



25

25. SG 14 2d Blue. A wonderfully fresh marginal inscriptional pair from Plate 4. Lettered LA-LB. Pristine very lightly mounted mint LB. Being Unmounted CAT £15,000 as a pair. £7,500



26

26. SG 26 1d Red Brown used on small piece with a Dublin Paid Spoon Duplex in Green. CAT £550 RPS Cert. £375



27

27. SG 30 1d Brick Red. A pristine Mint block of 4 stamps .GG being unmounted. CAT £2000 as a block. £750



35



28

28. SG 20a 2d Blue a very scarce strip of 5. Very fine used with Blue/Black 58 numeral cancels of Beaumaris. CAT £1750. £675



29

29. SG 23a 2d Blue lettered BA. Superb used, excellent colour and centering. CAT £350. £160



30

30. SG 23i 2d Blue watermark inverted. Very fine used CDS example CAT £650. £375



31

31. SG 34 2d Blue. A VFU strip of four. Crisp featherlight 165 numerals of Carlisle. Such a pretty multiple. £160



32

32. SG 36 1d Rose Red Plate 48. A pristine Unmounted Mint example RPS Cert CAT £2400. £1650



33

33. London Western District Inspectors Mark. An outstanding complete strike on SG 40 1d fine and very unusual. A 'Royal' Certificate. £325



33

34. SG 43 1d Plate 106 A very fine unmounted Mint Black of 8. CAT £480. £320

35. SG 48 ½ d Rose Red Plate 11a Plate no corner unmounted block of 4. £420



36

36. SG 57 10d Embossed. A very fine used, superb colour and 4 well cut margins. A lovely clean example. £650



37



38



39



40

37. SG 85 6d Lilac (hair lines) Superb used. CAT £200. £75

38. SG 94 4d Plate 13. Cancelled with a crisp complete Suez Steel CDs. With RPS Certificate. £145

39. SG 103 3d Rose Plate 10. Overprinted Specimen fine mounted mint. £180

40. SG 114 10d Deep Red Brown. Overprinted Specimen. Pristine Mounted Mint. £280



41

41. SG 125 6d VFU Indeed. A needle sharp West Strand CDS. Perfect quality with RPS Certificate. £285



42

42. SG 128 10/- Greenish Grey. A fresh mint example of this great Victorian rarity. CAT ££60,000. Superb deep colour. Some scuffing and creasing at right, otherwise fine. The gum with some hinge remains and with large part original gum. Missing from most collections in mint condition. A visually striking adhesive. A great rarity. £7800



43

43. SG 129 £1 Brown Lilac. A superb used example cancelled with a crisp lightly applied Portsmouth CDS March 29 1882. CAT £7800 with premium. £3200.



44

44. SG 132 £1 Brown. A very fine used example, with a crisp High St SE Bourough CDS Oct 26th 1883. Superb colour and centering. £4200



45



46



47

45. SG 147 6d Grey Plate 14. A VFU example with a crisp London WE Steel CDS. RPS Certificate. £160

46. SG 147 6d Plate 16. VFU Indeed. A superb Spalding Steel CDS> Exceptional quality with RPS Certificate. £180

47. SG 150 1/- Plate 13. VFU Indeed. Half a crisp light and upright Grey Town Steel CDS. £160



48



49



50



51

48. SG 151 1/- Orange-Brown. A VFU example with a clear, crisp and upright London EC Steel CDS. RPS Certificate. £625

49. SG 158 3d Rose Plate 20. A fine Mounted Mint example with excellent colour and centering. CAT £900. £290

50. SG 158 3d Plate 21. VFU indeed. A crisp Llangollen Steel CDS> Most attractive with RPS Certificate. £200

51. SG 159 3d on 3d Lilac superb used with a Continental Night Mail CDS. £200



52



53



54



55



56

52. SG 161 6d Plate 18. VFU indeed. A lovely sharp Kenilworth Steel CDS. A beauty with RPS Certificate. £125

53. SG 163 1/- Plate 13. VFU indeed. A superb Burnley Steel CDS. RPS Certificate accompanies. £220

54. SG 163 1/- Orange Brown. A pristine Mounted Mint example. CAT £825. £325

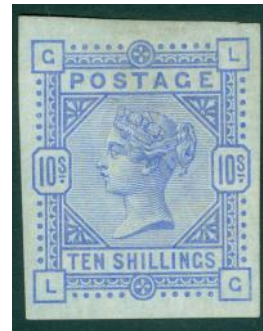
55. SG 165 1/2 d Pale Green. Superb used with a Bromsgrove CDS. £45

56. SG 167 1 1/2 d Venetian Red. Very fine used with a Newington CDS Nov 23rd 1881. £40



57

57. SG 177 10/- Ultramarine Blued Paper. Pristine unmounted and OVPTD Specimen. A really quite exceptional adhesive. Flawlessly centered, full perfs and the strongest blueing to the paper we have seen in quite a while. Light offsets on reverse from being stored with sheets of SG 176. Full untouched original gum. Very fine quality indeed. £2200



58

58. SG 177a 10/- Imprimatur. A wonderfully fresh Mounted Mint example with superb colour and delicate blueing to paper. A rare stamp. CAT £6250. £4200



60

60. SG 182 10/- Cobalt Fine Mint CAT £40,000. Mounted Mint hinge remain, light vertical gum crease unseen at face. Very scarce and seldom offered. £4750



59

59. SG 178 2/6d Lilac. VFU indeed. A superb Notting Hill Archer Steel CDS. Superb quality. With RPS Certificate. £220



61



63



62

61. SG 183 10/- Ultramarine fine lightly mounted mint. Very fresh superb colour. £875

62. SG 183 10/- Ultramarine. A crisp Glasgow CDS for May 29th 1889. A lovely adhesive. £380

63. SG 183 10.- Ultramarine. A very well centered example with outstanding colour and a crisp upright Telegraphic circle cancel. RPS Certificate accompanies. £475



64

64. SG 183a 10/- Pale Ultramarine. A pristine mounted mint marginal block of 4. Superb colour and centering. A light horizontal gum crease affects stamps KG KH. Unseen at face. CAT £12,750 as a block. £4250



65



67



66

65. SG 183a 10/a Pale Ultramarine. Very fine used Jersey CDS. Nov 14th 1901. £360

66. SG 183a 10/- Pale Ultramarine superb used. House of Commons CDS April 9th 1888. A very rare post-mark. Heinzgeorg Richter Cert £750.

67. SG 185 £1 Brown-Lilac. A superb example very fine used with a neatly placed Dublin Sorting Office CDS for June 5th 1890. £1750



68



69



70



71



72

68. SG 188 1 ½ d Lilac Superb used with a lightly placed Newton Abbot CDS Aug 3rd 1886. £50

69. SG 188 1 ½ d colour trial. Lilac on Buff. A fine Mounted Mint example. £425

70. SG 190 2 ½ d Lilac very fine used with a Beyrout Hooded CDS. £45

71. SG 190 2 ½ d Colour Trial in green on Buff Yellow fine unmounted mint. £425

72. SG 190 2 ½ d Colour Trial. Purple on Pink. Lightly mounted mint. £425



73



74



75



76



77

73. SG 191 3d Colour Trial Purple on Blue. Fine mounted mint. £450

74. SG 192 4d Dull green A superb example. Perfs, colour, centering all perfect. A crisp London CDS £225

75. SG 194 6d Dull Green. VFU a glorious Tunbridge Wells Steel CDS. The colour is magnificent. £265

76. SG 196 1/- Dull Green. VFU indeed. A superb corner Nunney Steel CDS. The colour and freshness is superb. RPS Certificate accompanies. £325

77. 1887 ½ d Vermilion Overprinted Cancelled Type 14. Spec K27T CAT £950 fine fresh Mounted Mint, very scarce. £280



78

78. SG 210a 10d Dull Purple and Deep Dull Carmine. Wonderful colour and freshness. VFU a crisp CDS. With RPS Certificate. £250

79. SG 256 10d Slate-Purple and Deep (glossy) Carmine. SG Spec M43 (4) A pristine very lightly mounted mint marginal example taken from a strip of 3. Brandon Cert. CAT £4500. £3600



79



80

80. SG 266 £1 Dull Blue Green, very fine used with an upright Guernsey CDS



81

81. SG 403 £1 Green. A very fine marginal pair each cancelled with a lightly placed Guernsey CDS. £2400



82



84



83

82. SG 416 5/- Rose-Red M68(2). A VFU example. A crisp Haydn Rd Nottingham Steel CDS. With RPS Certificate. £120

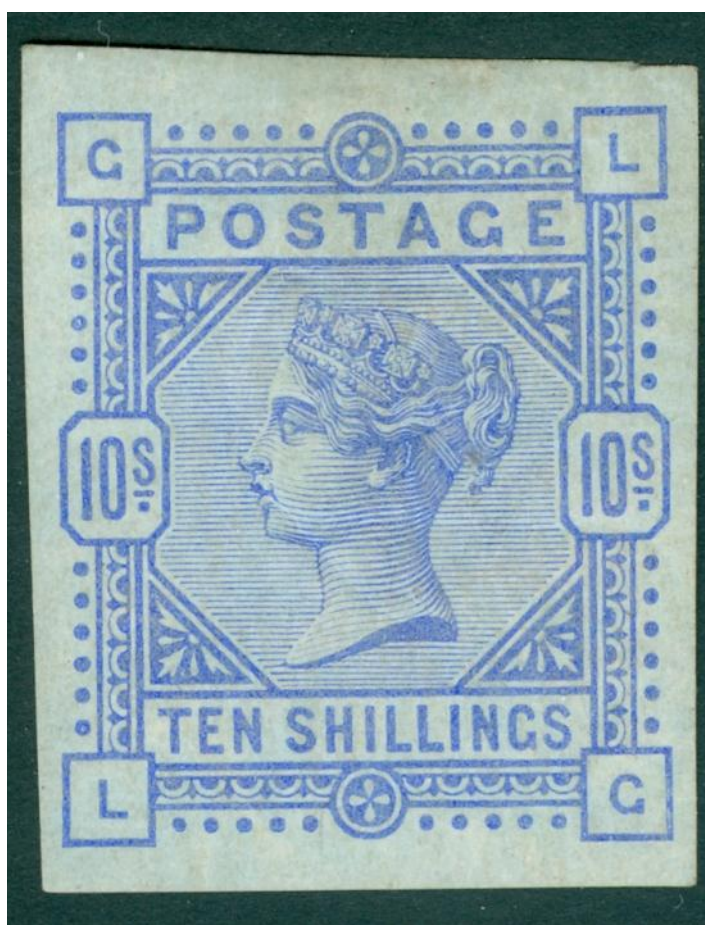
83. SG 451 5/- A pristine Silverdale Steel CDS> Outstanding quality. RPS Certificate accompanies. £125

OFFICIALS

84. SG 075 2d Green & Red. Pristine very lightly Mounted Mint. £120



Steve Allen
British & Colonial Stamps
February List 2012



58

**Email; Steveallen-
orders@live.co.uk**
Www.stevenallenstamps.com
Tel; 023 92598623

Barclays ,
81a London Road,
Waterlooville, PO7 7ER
IBAN: GB53 BARC 2069 3423 7460 54
SWIFT IBAN BIC: BARCGB22
ACCOUNT NUMBER: 23746054
BRANCH SORT CODE: 20-69-34

Cheques made payable to
British & Colonial Stamps LTD

Open 08.30—20.00
Mon—Sat

